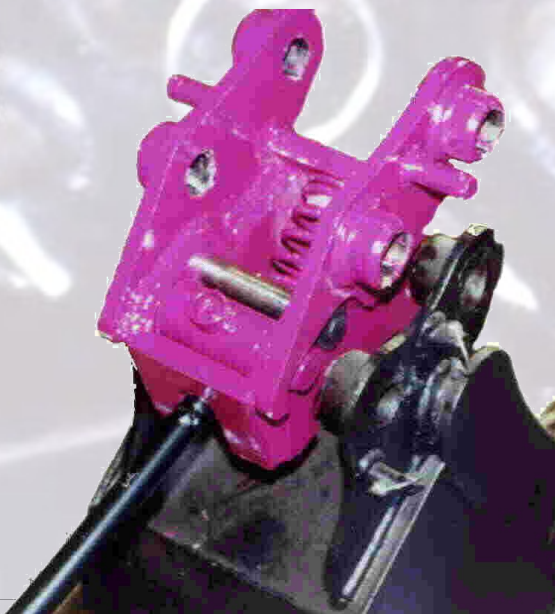
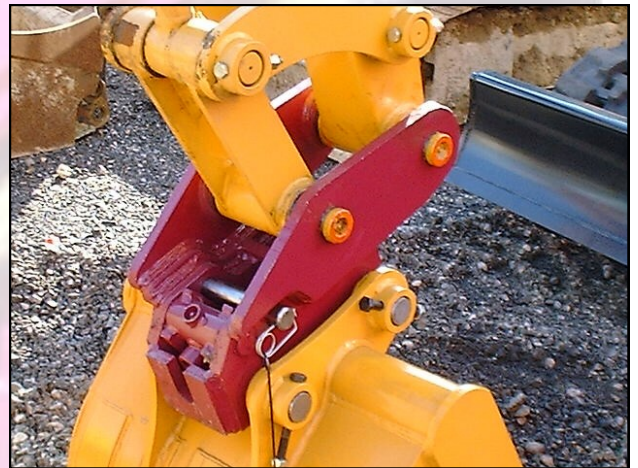


Spring Type Hitches

Spring type manual Quick Hitches are an easy and reliable option for 3/4 to 9 ton and backhoe loader excavators

Standard Features:

- 1: Lower main frame constructed from 450HB material for strength and durability
- 2: Use standard buckets fitted with dummy pins, no costly modifications required!
- 3: All hitches are CE marked and conform to the Machinery Directive (directive 98/37/EC) and with HSE national legislation
- 4: All Hitches supplied with operators manual and warning stickers



- 5: Easy to fit requires no pipework or fittings and is ready to use immediately
- 6: Manual safety pin (which cannot be fully removed) for complete safety
- 7: Bucket is locked on with a strong spring and is released by opening the rear hook with the bat supplied



Excavator Services Ltd



Tel: 01283 815544
Fax: 01283 812961

Unit 315 Fauld Ind. Est.
Nr Tutbury, Burton on Trent
Staffordshire, DE13 9HS

Web: www.abiljo.ltd.uk
Email: sales@abiljo.ltd.uk